

Customer :

customer

Customer part :

customer part

Comment :

Comment

S1=2.28

S2=2.83

Tmax=454

Tp S2=493.0

PI=0.45

HI=94

Sample =1747.80

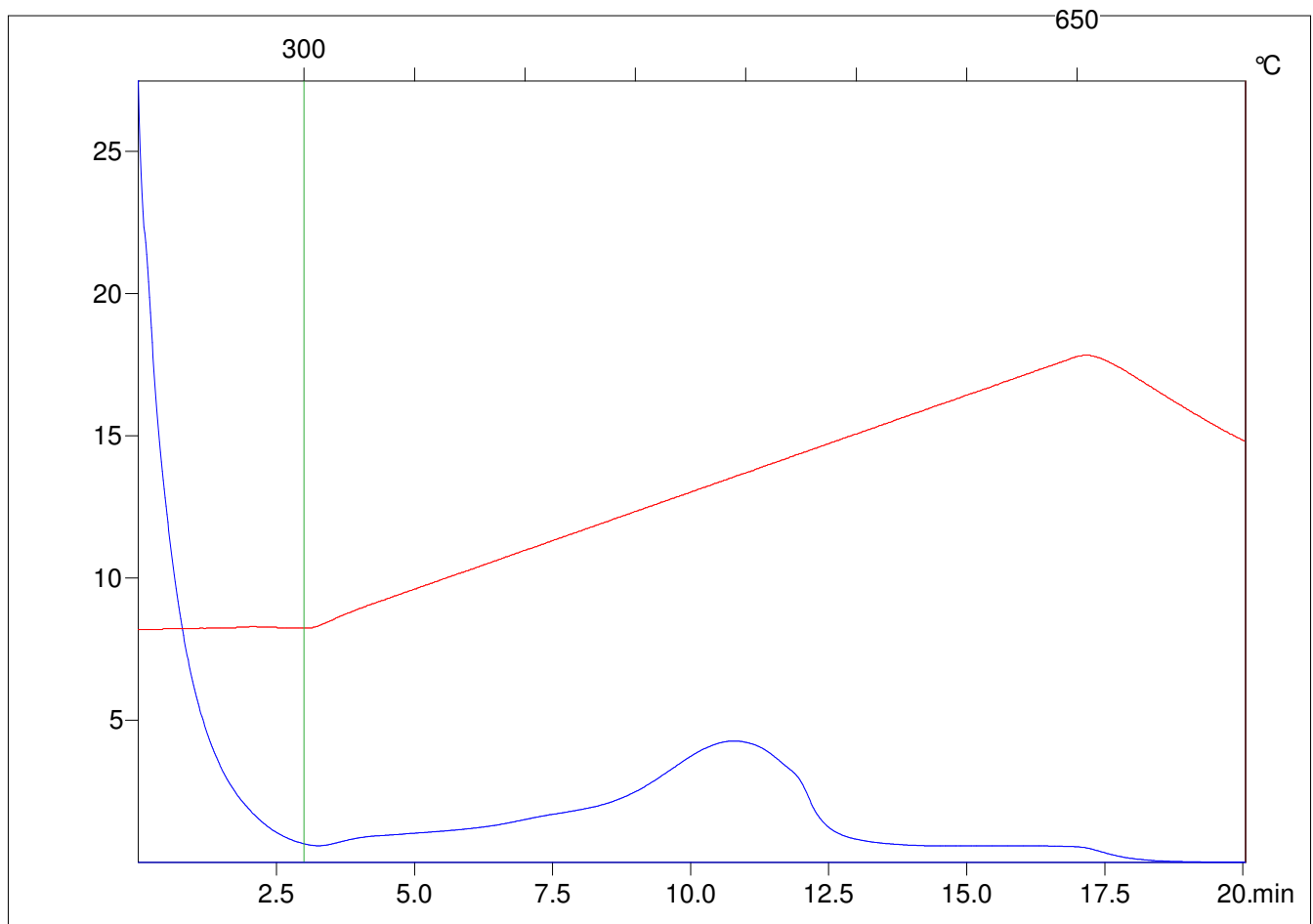
Method =Bulk Rock

Cycle=Basic

KFID(10*9)=1444

Qty =70.3

TOC=3



C:\VINC\PK2_1792\PK090.R00 : FID pyrolysis graphic

State

Pyro Status

Oxi Status